

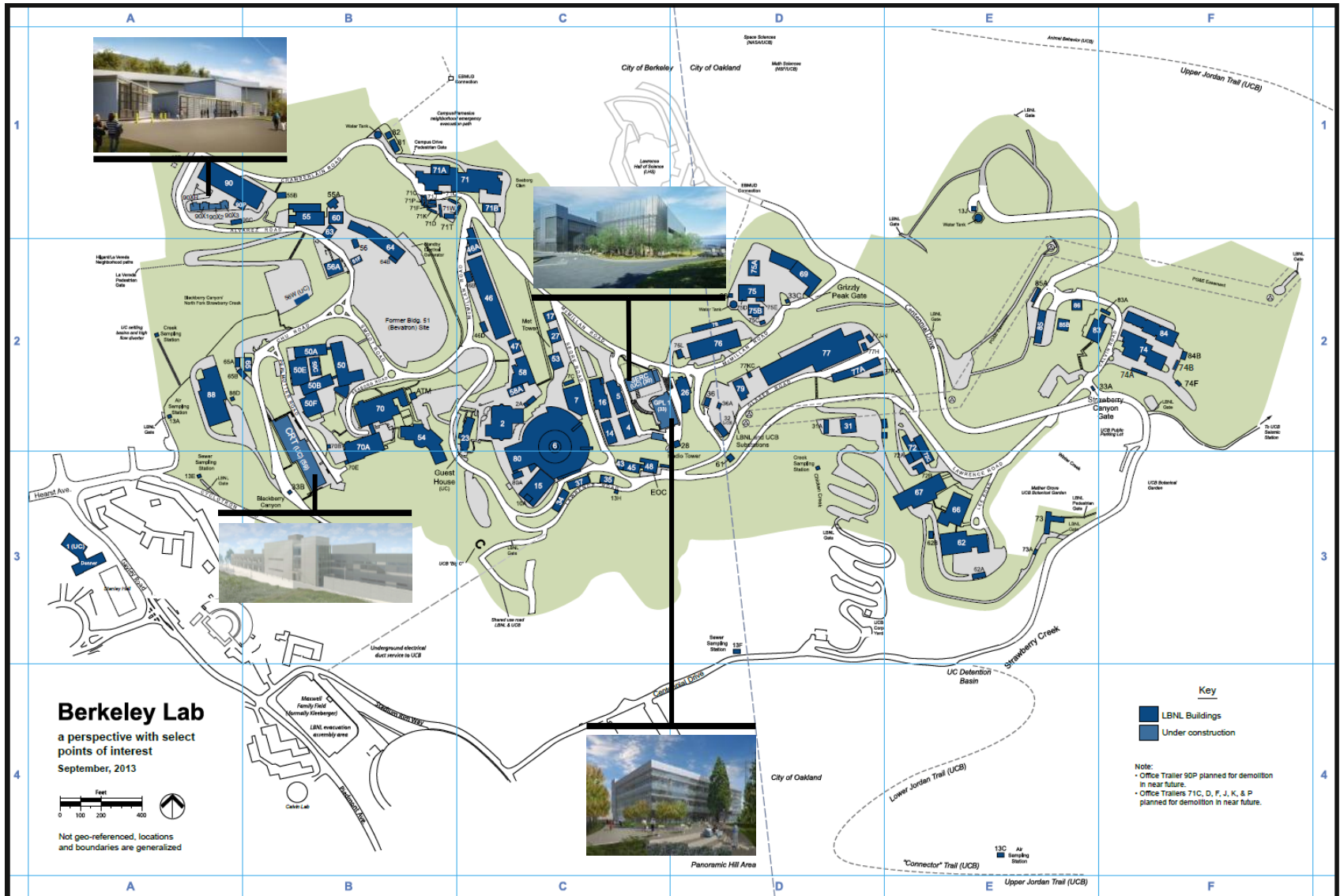


Lawrence Berkeley National Lab Capital Projects Update

Presentation to Community Advisory Group

March 20, 2014

Building Construction Map



Computational Research and Theory (CRT)



CRT – Current Activities



CRT – Current Activities



CRT – Current Activities



CRT – Current Activities



CRT – Current Activities



CRT – Current Activities



General Purpose Lab (GPL)



GPL – Current Activities



GPL – Current Activities



GPL – Current Activities



GPL – Current Activities



GPL – Current Activities



Solar Energy Research Center (SERC)



Solar Energy Research Center

SERC – Current Activities



SERC – Current Activities



SERC – Current Activities



SERC – Current Activities



SERC – Current Activities



SERC – Current Activities



Facility for Low-Energy eXperiments in buildings (FlexLab)



FlexLab – Current Activities



FlexLab – Current Activities



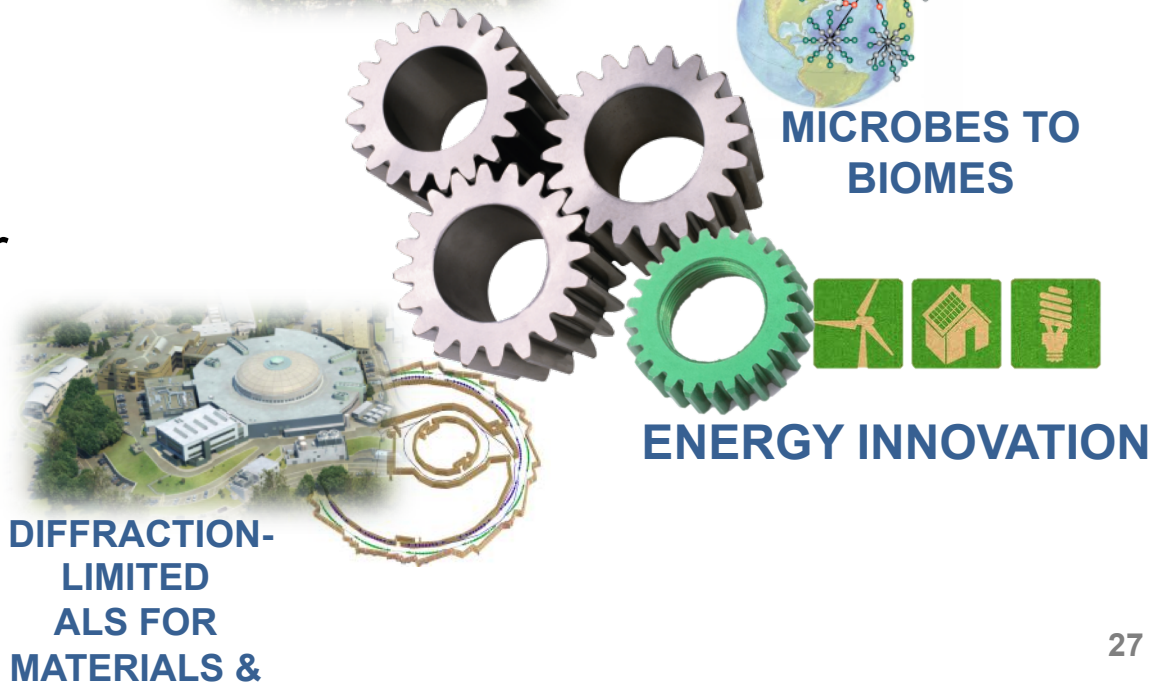
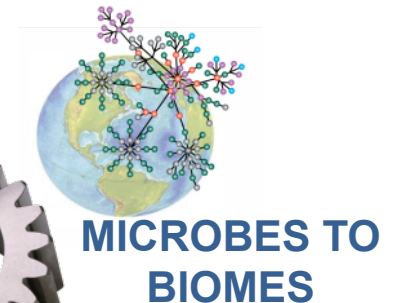
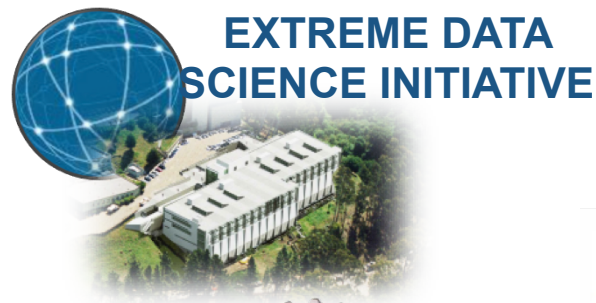
FlexLab – Current Activities



Biosciences Central to Berkeley Lab Strategy



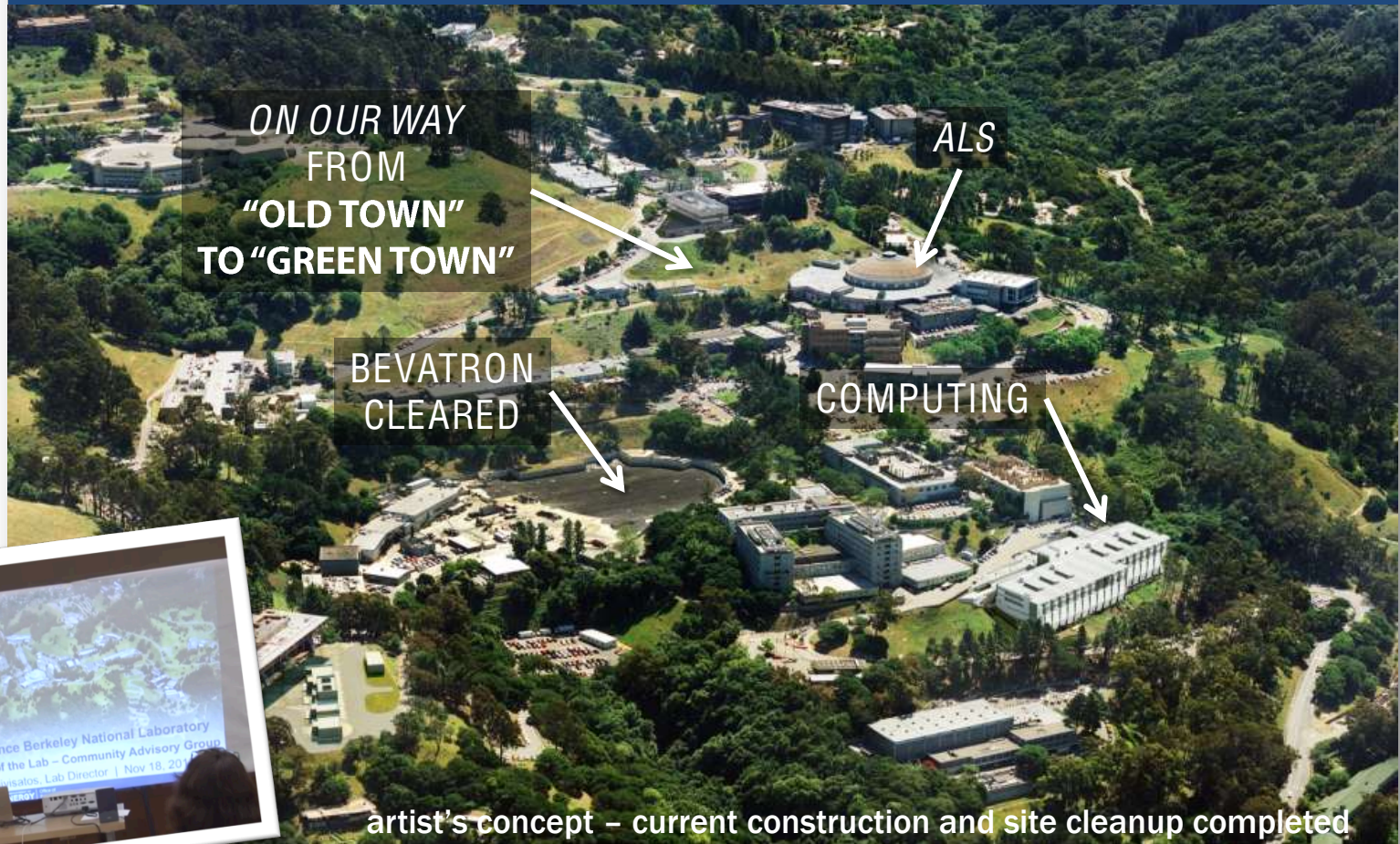
- LBNL Program Vision
 - Computation
 - ALS: Soft X-ray capability
 - Bioscience
 - Renewable, sustainable energy technology
- Synergies create most efficient opportunities for Science



Science Initiatives and Infrastructure Presented at November 2013 CAG meeting



Mapping of science initiatives onto the Berkeley Hill site



New Proposal for an Integrative Genomics Building (IGB)

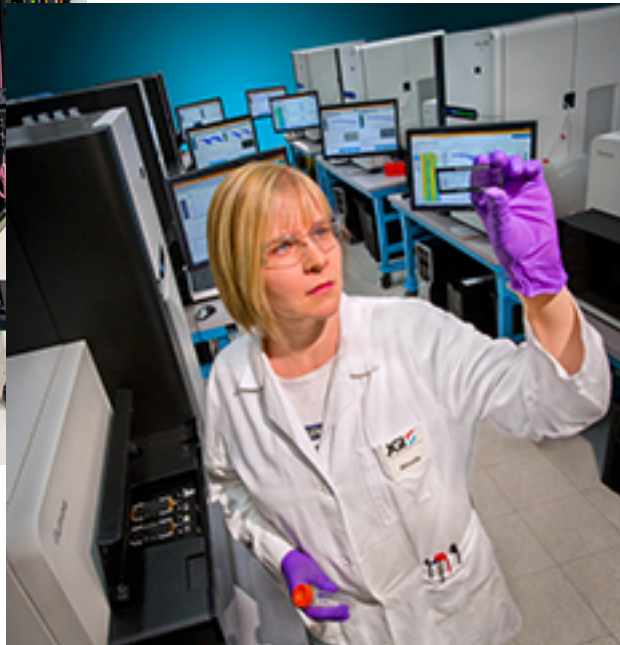


- We are proposing this building and working to secure funding
- What is the program need?
 - Collocation of Joint Genome Institute (Walnut Creek) and Knowledgebase (Emeryville) at LBNL
 - Benefit: Enhance Biosciences Collaboration at LBNL

Integrative Genomics Building (IGB)



- Proposed Facility Specifications
 - 70,000–90,000 sf of Lab and office space
 - Environmentally responsible
- **No design yet exists for this proposed building**
- **Early CAG involvement is critical before design begins**
- Will discuss next steps at next CAG meeting and will work to get your input





Thank You

Find us at: www.lbl.gov